



OWNER'S HANDBOOK MINI CONNECTED



MINI CONNECTED

ABOUT THIS OWNER'S HANDBOOK

Symbols used

* Identifies optional extras or specific national-market items of equipment, as well as equipment and functions not yet available at the time of printing.

** Not available in the South African market.

"..." Identifies menus or options on the control display or iPhone for selecting functions.

OVERVIEW

Principle

MINI Connected integrates iPhone apps into your car.

- ▷ The apps are shown on the car's control display.
- ▷ They are controlled by means of the MINI joystick.

Some of the functions on the iPhone can be used without a connection to the vehicle.

Please also refer to the information on MINI Connected in the Owner's Handbook for your car.

Functions

The MINI Connected app includes the following functions:

- ▷ Web radio
- ▷ News
- ▷ Twitter
- ▷ Facebook
- ▷ Google™ Send to car**
- ▷ Google™ Search**
- ▷ MINIMALISM Analyser
- ▷ Dynamic Music
- ▷ Mission Control
- ▷ Plugin

Requirements

- ▷ A compatible iPhone: 3GS or 4
- ▷ Compatible software
- ▷ Corresponding mobile phone contract

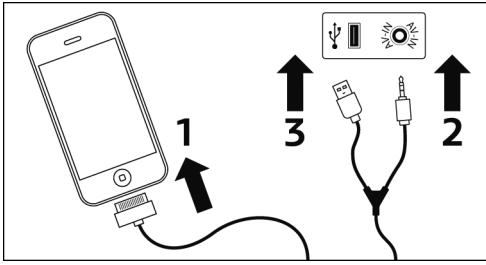
Extra charges may be incurred due to use of broadband data services.

STARTING UP

Connection options

- ▷ Video/audio adapter for Apple iPod/iPhone*
- ▷ USB Snap-in adapter*
- ▷ Apple USB lead*

Connecting



1. Plug audio/video lead into the iPhone, see arrow 1.
2. Plug audio/video lead jack plug into the car's AV-IN connection, see arrow 2.
3. Plug audio/video lead USB connector into the car's USB interface, see arrow 3.

Activating

1. Connect iPhone.
2. On iPhone: select MINI Connected app.
3. On on-board computer: "MINI Connected".

FUNCTIONS

Web radio

Principle

Enables transmission of internet radio stations. The reception quality is dependent on the location of the vehicle and the broadband data connection.

Favourites

You can store up to 50 stations as favourites.

Opening favourites

1. "MINI Connected"
2. "Web radio"
3. ☆ "Favourites"
4. Select favourite.

Saving favourites

1. "MINI Connected"
2. "Web radio"
3. ☆+ "Add to favourites"

The currently selected station is saved to the list of favourites.

Deleting favourites

1. "MINI Connected"
2. "Web radio"
3. ☆- "Delete from favourites"

The currently selected station is deleted from the list of favourites.

Station search: A-Z search

Searching for specific station names.

1. "MINI Connected"
2. "Web radio"
3. 🔍 "Search for station"
4. "A-Z search"
5. Select at least three letters.

To enter a space: select the **␣** symbol.
To delete letters, if necessary:

- ▷ To delete individual letters:
Turn the MINI joystick to select **⬅**, then press in the MINI joystick.
- ▷ To delete all letters:
Turn the MINI joystick to select **⬅**, then press and hold the MINI joystick.

6. "OK"
7. Select station.

Station search: by location

Searching for stations in particular geographical locations.

1. "MINI Connected"
2. "Web radio"
3. 🔍 "Search for station"
4. "By location"
5. Select continent.
6. Select country.

7. Select state/city.
8. Select station from alphabetically arranged list.

Station search: by genre

Searching for stations featuring specific genres.

1. "MINI Connected"
2. "Web radio"
3. 🔍 "Search for station"
4. "By genre"
5. Select genre.
6. Select station from alphabetically arranged list.

Station search: in the local area

Searching for stations close to the vehicle's present location.

Deactivation of search option possible.

1. "MINI Connected"
2. "Web radio"
3. 🔍 "Search for station"
4. "Local stations"
5. Select station.

Station search: MINI Top stations

Searching for favourite stations and MINI web radio stations.

1. "MINI Connected"
2. "Web radio"
3. 🔍 "Search for station"
4. "MINI Top stations"
5. Select MINI web radio station or Top station.

Station search: latest results

Displaying the latest search results.

1. "MINI Connected"
2. "Web radio"
3. 🎵 "Last search results"
4. Select station.

Similar stations

Displaying stations similar to the station currently selected.

1. "MINI Connected"
2. "Web radio"
3. 🎵 "Similar stations"
4. Select station.

Station details

Displaying additional information on the station currently selected, e.g. station name, logo, address or phone number.

1. "MINI Connected"
2. "Web radio"
3. 📄 "Station details"

Sound quality

Bit rate, format and overall quality can be selected.

1. "MINI Connected"
2. "Web radio"
3. 🎵 "Audio quality"
4. Select sound quality.

Switching to MINI Connected menu

When you exit web radio, the system automatically switches to the Radio menu. To continue, switch to the main menu and select MINI Connected again.

Switching from web radio to iPhone music player

Music playback starts as soon as a track is selected or when a different track is selected.

News

Principle

- ▷ RSS news feeds can be received.
- ▷ They are shown on the control display/iPhone.
- ▷ Settings/entries are made directly on the iPhone.

- ▷ Read out loud function of voice control system* can be used.

Viewing preset news items

1. "MINI Connected"
2. "News"
3. Select news item.

Selecting an RSS feed

1. "MINI Connected"
2. "News"
3. "Source/RSS feed"
4. Select RSS feed.
5. Select news item.

Scrolling is not possible while you are driving.

Changing news item

- ▷ Previous news item: select the ⏪ symbol.
- ▷ Next news item: select the ⏩ symbol.

Reading news out loud

- ▷ To start reading out loud: select the ▶ symbol.
- ▷ To restart reading out loud: select the ⏮ symbol.
- ▷ To read out the previous paragraph: select the ⏪ symbol.
- ▷ To read out the next paragraph: select the ⏩ symbol.

Adding an RSS feed

Settings are entered on iPhone.

1. Unplug iPhone.
2. "MINI Connected"
3. "News"
4. "Edit"
5. "+"
6. Select "RSS feed URL" or "Website/URL".
7. Select RSS feed.
8. "+"

Deleting an RSS feed

Settings are entered on iPhone.

1. Unplug iPhone.
2. "MINI Connected"
3. "News"
4. "Edit"
5. Select RSS feed.
6. "Delete"
7. "Done"

Twitter

Principle

Allows you to display tweets and send predefined tweets from the vehicle.

To do so you must be a registered user on Twitter.

Logging on

Settings are entered on iPhone.

1. Unplug iPhone.
2. "MINI Connected"
3. "Twitter"
4. "Log into Twitter"
5. Enter user name and password.
6. Connect iPhone.
7. "Twitter"

Reading tweets

1. "MINI Connected"
2. "Twitter"
3. Select news item.

Changing tweet

- ▷ Previous news item: select the ⏪ symbol.
- ▷ Next news item: select the ⏩ symbol.


Viewing tweet history

1. "MINI Connected"
2. "Twitter"
3. Select sender.
4.  "Timeline"

Setting favourite

1. "MINI Connected"
2. "Twitter"
3. Select news item.
4.  "Favourite"

Sending a predefined tweet

1. "MINI Connected"
2. "Twitter"
3.  "Post tweet"
4. Select news item from list.
5.  "Post tweet"

Retweeting

1. "MINI Connected"
2. "Twitter"
3. Select news item.
4.  "Retweet"
5.  "Post tweet"

Setting update interval

Settings are entered on iPhone.

1. Unplug iPhone.
2. "MINI Connected"
3. "Twitter"
4. "Update interval"
5. Select interval.

Creating tweets in PostEditor

The PostEditor enables you to create, edit and delete tweets on your iPhone. The posts created in the PostEditor can be sent as predefined tweets using the MINI Connected Twitter function.

The PostEditor is started as follows:

1. "MINI Connected"
2. "Twitter"
3. "Posts"

Facebook

Principle

Allows you to display news and send predefined posts via the Facebook platform in the car.

Requirements

- ▷ An active Facebook account.
- ▷ Permission for the MINI Connected app to access the user's profile data.

Logging on

Settings are entered on iPhone.

1. Unplug iPhone.
2. "MINI Connected"
3. "Facebook"
4. "Log into Facebook"
5. Enter user name and password.
6. Complete confirmation.
7. Connect iPhone.
8. "Facebook"

User name and password are automatically verified.

Reading news

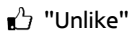
1. "MINI Connected"
2. "Facebook"
3. Select news item.

Rating news item

1. "MINI Connected"
2. "Facebook"
3. Select news item.

4.  "Like"

A link to the selected news item is shown on your profile page.



"Unlike"

The link to the news item is removed from your profile page.

Navigating through new items

1. Previous news item: select the |◀ symbol.
2. Next news item: select the ▶| symbol.

Reading comments on a news item

1. "MINI Connected"
2. "Facebook"
3. Select news item.
4. 🗨️ "Comments"
5. Select comment.

Sending a predefined news item

1. "MINI Connected"
2. "Facebook"
3. "What's on your mind?"
4. Select predefined news item from list.
5. "Share"

Creating tweets in PostEditor

The PostEditor enables you to create, edit and delete posts on your iPhone. The posts created in the PostEditor can be sent as predefined posts using the MINI Connected Facebook function.

The PostEditor is started as follows:

1. "MINI Connected"
2. "Facebook"
3. "Posts"

Google™ Send to car **

Principle

Destinations selected in Google Maps can be transferred to the car's navigation system with the aid of the iPhone.

Manual entry of the destination in the car is not required.

Requirements

To receive destinations via the iPhone and transfer them to the navigation system:
Active MINI Connected user account.

Selecting the desired destination

1. Select destination in Google Maps.
2. Send selected destination to a MINI Connected user account.

Transferring destination to navigation system

1. "MINI Connected"
2. "Google™ Send to Car"
List of all available destinations. The destination last received is at the top of the list.
3. Select destination from list.

4. 🗺️ "Start guidance"

The destination co-ordinates are transferred to the MINI navigation system and set as a new destination.

Selecting the destination's phone number

If the destination details include a phone number, you can select that number directly in the MINI Connected app.

1. "MINI Connected"
2. "Google™ Send to Car"
3. Select destination from list.
4. 📞 "Call"

Google™ Search **

Google™ Search allows you to search for places by location. By entering keywords you can search for nearby places for the following locations:

- ▷ The current location of the vehicle
- ▷ The current navigation system destination
- ▷ A location entered manually

Local search for: current location

1. "MINI Connected"
2. "Google Search"

3. "At current location"
4. Enter keyword for places to be searched for.
5. "OK"
6. Select place from list.
Address, phone number and website address are displayed if available.

Local search for: current destination


Requirement: route guidance must be active.

1. "MINI Connected"
2. "Google Search"
3. "At destination"
4. Enter keyword for places to be searched for.
5. "OK"
6. Select place from list.

Local search for: a different location


1. "MINI Connected"
2. "Google Search"
3. "At different location"
4. Enter address of required location.
5. Enter keyword.
6. "OK"
7. Select place from list.

Transferring address to navigation system

1. Select desired destination from list.
2.  "Start guidance"

Selecting the place's phone number

If the place details include a phone number, you can select that number directly in the MINI Connected app.

1. Select desired destination from list.
2.  "Call"

MINIMALISM Analyser

This function analyses how efficiently the driver accelerates, brakes and changes gear. MINIMALISM points can be gained by adopting as efficient a driving style as possible. They indi-

cate how fuel-efficient the current driving style is in comparison with the average MINI driver. The number of stars indicates how well you have rated in the category concerned in the last ten minutes.


Requirements

To be able to make full use of the MINIMALISM Analyser, your agreement to local storage of the driving style data on your iPhone is required.

Confirming data storage

1. On iPhone: "MINIMALISM Analyser"
2. "Settings"
3. "Activate Analyser"


Activating MINIMALISM Analyser

1. "MINI Connected"
2. "MINIMALISM Analyser"
3.  "MINIMALISM Analyser"

A tick is shown as confirmation. The MINIMALISM Analyser then starts assessing your driving style.

A trip analysis is not stored until you have driven a distance of at least 5 km. A maximum of 100 journeys can be stored on the iPhone. When that number is reached, each time a new trip is stored, the oldest one is deleted.

Viewing high score

1. "MINI Connected"
2. "MINIMALISM Analyser"
3.  "My High Score"


The following details of the current journey are shown:

- ▷ The absolute MINIMALISM score.
- ▷ The average MINIMALISM score per km.
- ▷ The mileage for the current journey.

The average MINIMALISM score is not calculated until you have driven a distance of at least 5 km.


The list below shows the previous trips with the highest average points scores in descending order.

Stopping trip analysis

1. "MINIMALISM Analyser"
2.  "MINIMALISM Analyser"

The current trip analysis is stopped.

Starting a new trip assessment

1. "MINIMALISM Analyser"
2.  "MINIMALISM Analyser"

Analysing your journeys on the iPhone

You can analyse your journeys on your iPhone.

1. On iPhone: "MINIMALISM Analyser"
2. "Overview"

In the top part of the screen, you can scroll through all stored trips.

The number of stars shows the rating in the category concerned. The lower part of the screen details the average MINIMALISM scores achieved per km and trip over time.

Sorting the saved trips

1. On iPhone: "MINIMALISM Analyser"
2. "Journeys"

The saved trips can be sorted by the following two criteria:

- ▷ The average MINIMALISM score per km.
- ▷ The date of the trip.

Selecting a specific trip opens the corresponding detailed view.

Online ranking

Once five trips have been stored, you can compare your own high score with other MINI drivers. For that purpose, your average score per 100 km is calculated from your best five trips.

Online ranking: viewing the ten best MINI drivers

1. On iPhone: "MINIMALISM Analyser"
2. "Ranking"
3. "Top 10"

Online ranking: viewing your own ranking position

1. On iPhone: "MINIMALISM Analyser"
2. "Ranking"
3. "My position"

Deleting saved trips

1. On iPhone: "MINIMALISM Analyser"
2. "Settings"
3. "Delete all data"

Viewing MINIMALISM tutorial on the iPhone

1. On iPhone: "MINIMALISM Analyser"
2. "Tutorials"

Mission Control

Principle

Mission Control enables playback of predefined audio commentaries informing the driver about vehicle characteristics and the present driving style.

Requirements

Topics are available to download for playback of audio commentaries. Each topic has effects on the properties of the commentaries.

- ▷ Download topic for iPhone.
- ▷ On iPhone: activate Mission Control as active audio app.

Downloading topics

1. On iPhone: "Mission Control"
2. "Edit"
3. "+"

The available topics are shown.

Activating audio app

1. Unplug iPhone.
2. "MINI Connected"
3. "Info"
4. "Settings"

5. "Mission Control/Dynamic Music"

Select topic

1. "MINI Connected"
2. "Mission Control"
3. "Themes"
4. Select desired topic from list.

Activating Mission Control

1. "MINI Connected"
2. "Mission Control"
3. "Mission Control"
 - ☑ A tick is shown as confirmation.

Dynamic Music

The tempo of music tracks specially composed for Dynamic Music adjusts to your driving.

Those music tracks are available for download.

Requirements

- ▷ To use Dynamic Music, music tracks have be downloaded to the iPhone.
- ▷ On iPhone: activate Dynamic Music as active audio app.

Downloading music tracks

1. On iPhone: "Dynamic Music"
2. "Edit"
3. "+"

The available music tracks are shown.

Activating audio app

1. Unplug iPhone.
2. "MINI Connected"
3. "Info"
4. "Settings"
5. "Mission Control/Dynamic Music"

Starting Dynamic Music

1. "MINI Connected"
2. "Dynamic Music"

Activating a music track

1. "MINI Connected"
2. "Dynamic Music"
3. Select desired music track from list.
A tick is shown as confirmation.

PlugIn

Principle

This function allows you to play back music on your iPhone/iPod via the MINI control display. It is controlled by means of the MINI joystick and the MINI buttons.

Requirements

- ▷ A compatible iPhone or iPod:
e.g. iPhone 3GS/iPhone 4 or iPod touch with iOS 4.1 or later.
- ▷ Full Bluetooth with USB.
- ▷ The MINI Connected app is not necessary.

Activating

1. Connect iPhone using audio/video lead.
2. On control display: "MINI Connected"
3. "PlugIn"
4. "Activate PlugIn"

Operation

When PlugIn is activated, the graphical interface of the connected device is shown on the control display. As a result, the control functions of the MINI Joystick and the MINI buttons are different and remain so until PlugIn is deactivated again.

The PlugIn controls depend on the iOS version used, e.g. iOS 4.1.

Controls: Home button

- ▷ Press once: opens the display menu bar.
- ▷ Press twice: opens the main menu.
- ▷ Press once and tilt MINI Joystick once to the left: opens MINI Connected menu.
- ▷ Press once and tilt MINI Joystick twice to the left: opens the main menu.

Controls: Toggle button

- ▷ Press once: returns to next higher menu level on iPhone/iPod.

Controls: MINI Joystick

- ▷ Press: select/play/pause.
- ▷ Turn: navigate through lists.
- ▷ Tilt to the left: skip to the beginning of the current music track or to previous music track in the playlist.
- ▷ Tilt to the left and hold: rewind.
- ▷ Tilt to the right: skip to the next music track in the playlist.
- ▷ Tilt to the right and hold: fast forward.

Deactivating PlugIn

There are several ways of deactivating PlugIn and returning to the MINI control environment:

Deactivating using the Home button

- ▷ Press once: returns to Activate PlugIn.
- ▷ Press twice: opens the main menu.
- ▷ Press once and tilt MINI Joystick once to the left: opens MINI Connected menu.
- ▷ Press once and tilt MINI Joystick twice to the left: opens the main menu.

Deactivating using the button: change Audio Source

Press once: switches to the last selected audio source.

HELP WITH PROBLEMS

Malfunction

In the event of malfunctions or error messages, proceed as follows:

1. Unplug iPhone.
2. Reconnect iPhone.
3. Restart MINI Connected app.

If the problem persists, proceed as follows:

1. Switch off iPhone.
2. Switch on iPhone again.
3. Restart MINI Connected app.

If the problem still persists, reset the iPhone. To do so, simultaneously press and hold the following buttons for at least ten seconds:

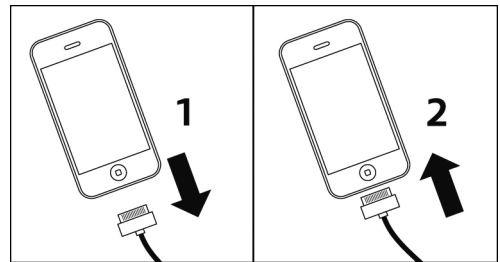
- ▷ Home
- ▷ Standby

If the problem still persists, initiate a self-diagnosis.

Self-diagnosis: carrying out

The self-diagnosis tests the connection between the car and the iPhone.

1. Unplug iPhone, arrow 1.



2. On iPhone: "MINI Connected"
3. "Info"
4. "Check connection"
5. "Self-diagnosis"
6. Reconnect iPhone, arrow 2.

Self-diagnosis: result

- ▷ Successful connection: "Connection OK"
- ▷ No fault present: "OK"
- ▷ Self-diagnosis failed: ✘
- ▷ Fault present: self-diagnosis aborts.

Self-diagnosis: fault rectification

1. "Information"
2. Follow the instructions.

If the problem persists, go to the MINI Connected support page at www.mini.com/connectivity or contact your MINI Service.

Self-diagnosis: connection failed

1. "Information"
2. Follow the instructions.

If the problem persists, go to the MINI Connected support page at www.mini.com/connectivity or contact your MINI Service.

If the iPhone has been restarted

If necessary, disconnect and reconnect the iPhone in order to be able to use the MINI Connected app.

The MINI Connected app is closed in the following situations:

- ▷ If an incoming call is received. The MINI Connected app is restarted after the phone call is finished. There may be delays in the process.
- ▷ When making an outgoing call.